

March/April Recruiting Calendars

Men's Basketball

Contact Period: March 16-22

Contact Period: The month of April,
except for:

Dead Period: Thursday prior to the
NCAA Men's DI Championship game
to Thursday noon after the game, and
Monday– Thursday of the week that
includes the initial date for the Spring
signing of the National Letter of Intent

Women's Basketball

Contact Period: March 1st– Thursday
prior to the NCAA Women's DI
Championship game

Dead Period: Friday prior to the NCAA
Women's DI Championship game
through Thursday of the week that
includes the initial date for the Spring
signing of the National Letter of Intent

Evaluation Period: 1 Women's
Basketball event sponsored by the
NCAA held in conjunction with, and
conducted in the host city of, the
NCAA Women's DI Championship

Quiet Period: Friday, Saturday and
Sunday immediately prior to the initial
date for the Spring signing of the
National Letter of Intent

Evaluation Period: Friday of the week
that includes the initial date for the
Spring signing of the National Letter of
Intent through the following Tuesday

Quiet Period: Wednesday of the week
following the initial date for the Spring
signing of the National Letter of Intent
through July 5th

Women's Softball

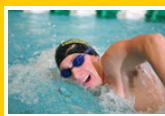
Contact Period: January 2nd– July 31st,
except for:

Dead Period: Monday– Thursday of the
week that includes the initial date for
the Spring signing of the National
Letter of Intent, and Thursday prior to
the start of the NCAA DI Softball
Championship through noon the day
after the game

Evaluation Period: High school,
regional and state championship
competition that does not occur
during a dead period



COMPLIANCE CORNER



MARCH/APRIL 2008

RECRUITING ROUNDUP

Dead Period (Bylaw 13.02.4.4)

A dead period is that period of time when it is not permissible to make in-person recruiting contacts or evaluations on or off the member institution's campus or to permit official or unofficial visits by prospective student-athletes to the institution's campus. The provision of complimentary admissions to a prospective student-athlete during a dead period is prohibited, except as provided in Bylaw 13.7.2.5 for a prospective student-athlete who visits an institution as part of a group. During such a dead period, a coaching staff member may not serve as a speaker at or attend a meeting or banquet at which prospective student-athletes are in attendance, except as provided in Bylaw 13.1.9.1. Coaches also may not visit the prospective student-athletes' educational institutions.

It remains permissible, however, for an institutional staff member to write or telephone prospective student-athletes during such a dead period.

NCAA Eligibility Center (Bylaw 13.9.1)

An institution shall not provide a high school or preparatory school prospective student-athlete a written offer of athletically related financial aid (per Bylaw 15.3.2.3) until he or she has registered with the NCAA Eligibility Center (NCAA Clearinghouse) and the institution has placed the prospective student-athlete on its institutional request list (IRL) with the NCAA Eligibility Center.



ELIGIBILITY UPDATE

Eligibility for Institutional Athletically Related Financial Aid (Bylaw 14.5.6.5)

A student-athlete who transfers from a four-year institution to a two-year institution and then to the certifying institution shall complete at least one regular academic term of enrollment at the two-year institution to be eligible for institutional athletically related financial aid at the certifying institution.

Intercollegiate Competition (Bylaw 14.02.6)

Intercollegiate competition occurs when a student-athlete in either a two-year or a four-year collegiate institution: (a) Represents the institution in any contest against outside competition, regardless of how the competition is classified (e.g., scrimmage, exhibition or joint practice session with another institution's team) or whether the student is enrolled in a minimum full-time program of studies; (b) Competes in the uniform of the institution or, during the academic year, uses any apparel (excluding apparel no longer used by the institution) received from the institution that includes institutional identification; or (c) Competes and receives expenses (e.g., transportation, meals, room or entry fees) from the institution for the competition.



George Mason University
Department of
Intercollegiate Athletics

(Recruiting Calendars cont.)

Baseball

Contact Period: March 1st– August 31st, except for:

Dead Period: Monday– Thursday of the week that includes the initial date for the Spring signing of the National Letter of Intent

Women's Lacrosse

Contact Period: January 2nd– Thursday prior to the NCAA D1 Women's Lacrosse Championship, except for:

Dead Period: Monday– Thursday of the week that includes the initial date for the Spring signing of the National Letter of Intent, the Friday before the D1 Women's Lacrosse Championship through Sunday of the championship

Evaluation Period: Evaluations may occur during one (1) event conducted during the weekend of the women's lacrosse championship, provided it is conducted on a day when no championship competition occurs and is within a 100 mile radius of the championship site (May23-25)

Contact Period: Monday after the championship through July 31st

Women's Volleyball

Contact Period: January 1st– July 31st, except for:

Dead Period: Monday– Thursday of the week that includes the initial date for the Spring signing of the National Letter of Intent

Cross Country/Track and Field

Contact Period: January 3rd– July 31st, except for:

Dead Period: 12:01 am on the 1st day of the NCAA D1 Men's and Women's Indoor Track and Field Championship to 12:01 am on the day following the completion of the championships, Monday– Thursday of the week that includes the initial date for the Spring signing of the National Letter of Intent, 12:01 am on the 1st day of the NCAA D1 Men's and Women's Outdoor Track and Field Championship to 12:01 am on the day following the completion of the championships

Other Sports

Dead Period: Monday– Thursday of the week that includes the initial date for the Spring signing of the National Letter of Intent in the applicable sport

ELIGIBILITY UPDATE *cont'd*



Two-Year College Transfer- Credit Earned at Four-Year Institution (Bylaw 14.5.4.5.2)

If a student-athlete attends a two-year college and, prior to regular enrollment at a member institution, attains additional credits as a part-time student in a four-year collegiate institution, the hours accumulated at the four-year institution may be used by the member institution in determining the student-athlete's eligibility under the two-year college transfer provisions, provided:

- (a) These hours are accepted by the two-year college and are placed on the transcript or other official document by the two-year college from which the student-athlete transfers prior to the date of initial regular enrollment at the NCAA member institution; and
- (b) Any official document (other than the student's transcript) used by the two-year college for this purpose includes the official seal of the two-year college, is signed by the appropriate academic official of the two-year college and is forwarded directly from the two-year college to the appropriate admissions official of the certifying institution.

PLAYING SEASONS

Vacation Periods and Between Terms (Bylaw 17.1.6.3.6)

Daily and weekly hour limitations do not apply to countable athletically related activities occurring during an institution's term-time official vacation period, as listed in the institution's official calendar, and during the academic year between terms when classes are not in session. If such vacation periods occur during any part of a week in which classes are in session, the institution is subject to the daily and weekly hour limitations during the portion of the week when classes are in session and must provide the student-athletes with a day off which may be a vacation day.



SPORTS WAGERING

Sports Wagering Activities (Bylaw 14.02.6)

The following individuals shall not knowingly participate in sports wagering activities or provide information to individuals involved in or associated with any type of sports wagering activities concerning intercollegiate, amateur or professional athletics competition:

- (a) Staff members of institution's athletics department
- (b) Non-athletics department staff members who have responsibilities within or over athletics department
- (c) Staff members of a conference office
- (d) Student-athletes